



OMBRA MOBIL



SUELO Y GRANDES AREAS
TOLDO DE PIE DOBLE CON
CUBIERTA INTEGRADA



OMBRAMOBIL OS4000



Pie transversal



Taco al suelo



Tejadillo integrado



- Toldos protegidos por tablero de cubierta
- No requiere generalmente una licencia de edificio
- Opciones de anclaje para los soportes usando las mangas empotradas del piso o los pies diagonales
- El perfil de gota cabido con el gutter integrado
- El montaje rápido y fácil
- Posibilidad de fijación de pared unilateral en vez de un soporte
- Puede combinarse con sistemas de suelo de aluminio de STOBAG (Concepto ISLA)

OS4000



min. 315cm
max. 555cm



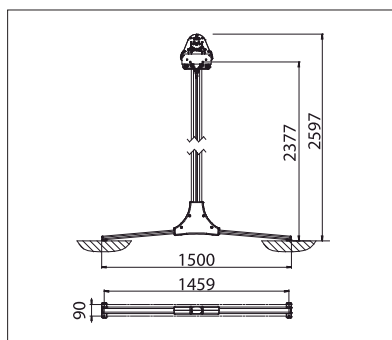
min. 300cm
max. 450cm



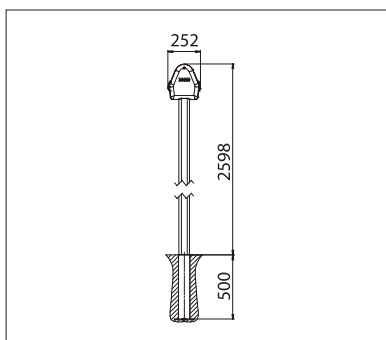
Post height
max. 260cm



max. 50 km/h



Vista lateral con pie diagonal



Vista lateral del anclaje por taco



EN 13561



COLORES

Descubre diferentes opciones modificando el color de la estructura.



TEXTIL

Elige entre un amplio abanico de materiales y colores.



ELECTRONICA

Más comodidad gracias al sistema remoto de control y luz.



OMBRAMOBIL OS4000

Mobile, double-sides folding-arm awning

OS4000



OS4000 awning closed



OS4000 with transverse foot OS412



OS4000 floor sleeve OS315

	min. 315 cm max. 555 cm		min. 300 cm max. 450 cm
--	----------------------------	--	----------------------------

	10-20°
--	--------

Description

Free-standing double-sided folding-arm awning with crank drive. Tensioning by awning cover. Extension and retraction of the awning by detachable crank and bevel gearbox. Crank made of metal with a hook and plastic-covered grip. The external surface is powder-coated to match standard colours. The full-length, rounded top box in extruded aluminium profile supports the construction and also protects the arms and cover against the weather. The side elements are cast aluminium alloy and fitted with fixing points to take the cover, gearbox and folding arms. A connecting profile is fitted to the outside of each side element. The cast aluminium alloy side caps close off the top box. The awning is tensioned by a roller tube. The roller tube contains an auxiliary spring to make rolling the cover easy. The folding arms are made of extruded aluminium profiles with cast aluminium precision joints. Tensioning springs and double stainless steel cables are built into the arms. The middle joint is fitted with a cable protection. The incline can be adjusted from 10° up to 20° by the swivelling section of the folding arms. The front edge of the awning is formed by the front rail of extruded aluminium chamber profile with fitted plastic end caps. The front rail also has a rain gutter and grooves for the cover and valance. The supports are connected to the awning by a connecting profile. The aluminium supports are rounded and measure 82 x 50 mm. Transverse feet are used for floor-mounting, made up of connector and foot plates of cast aluminium alloy. As a variation, the awning can also be installed with floor sleeves.

Options

Electric drive: AC motor 230V/50Hz or with friction brake, electronic end stop switch and thermo-protection. IP54 (spray water) protection with 50-150cm 4-pole connection.

METHOD OF DELIVERY

Awnings completely assembled, with cover.
Supports not mounted.

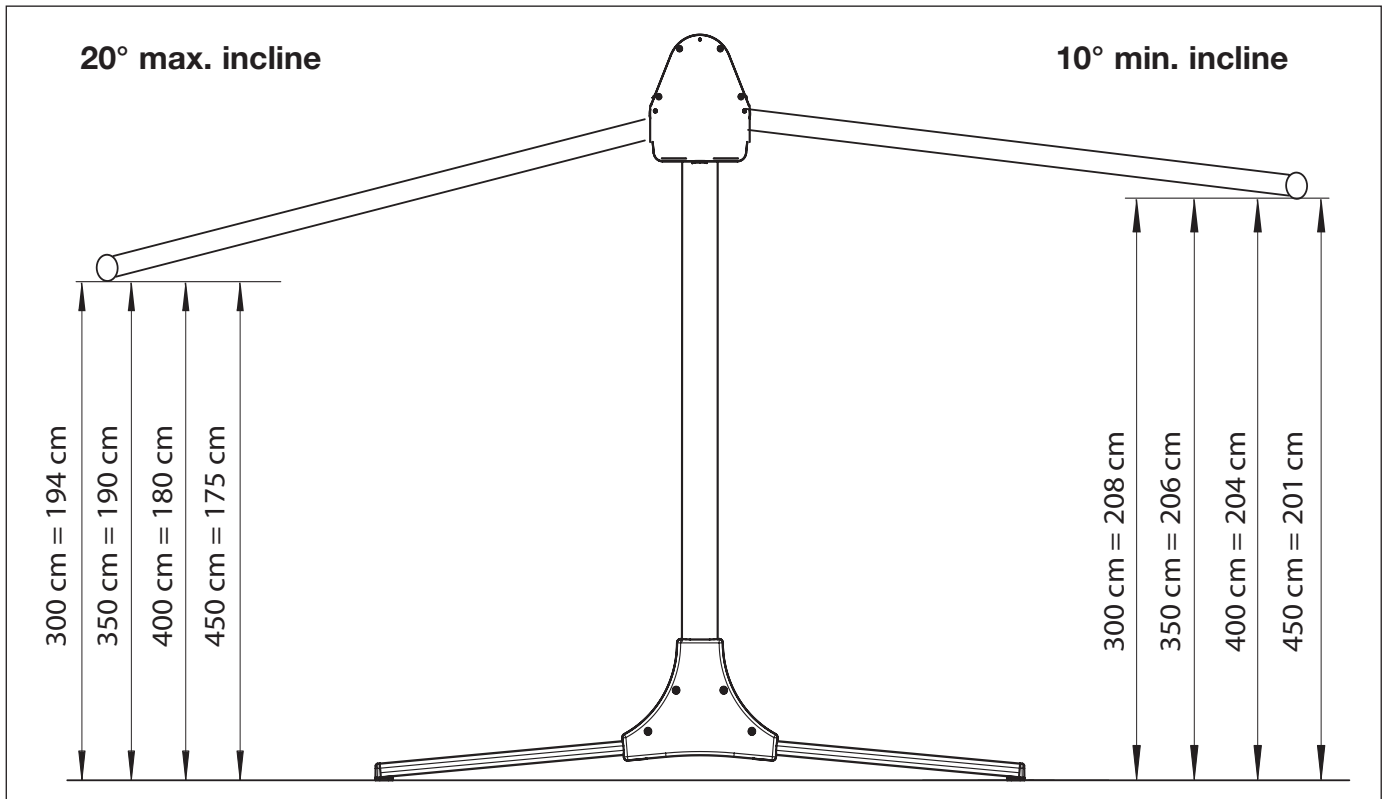


OMBRAMOBIL OS4000

Mobile, double-sides folding-arm awning

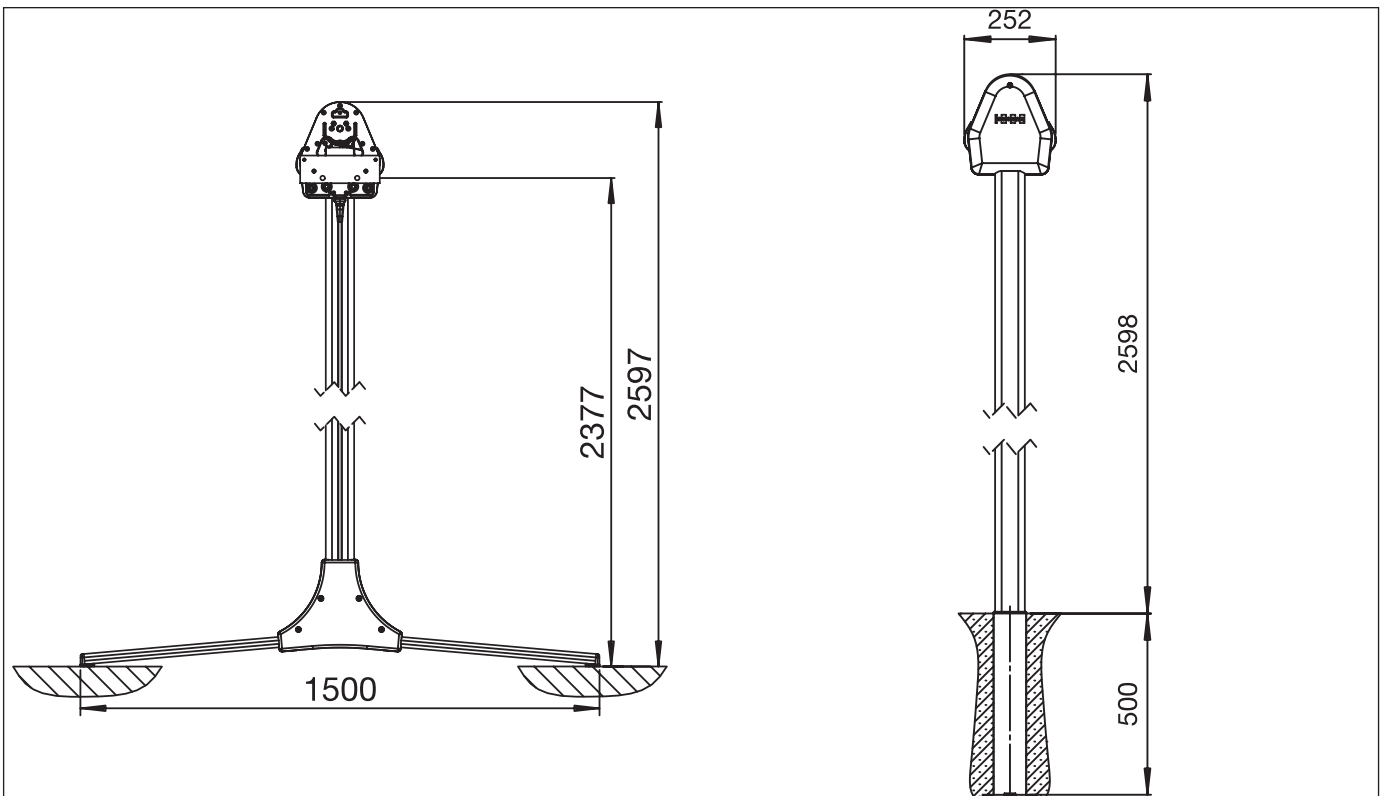
OS4000

Technical drawing



Version with transverse foot OS412

Version with floor sleeves OS315



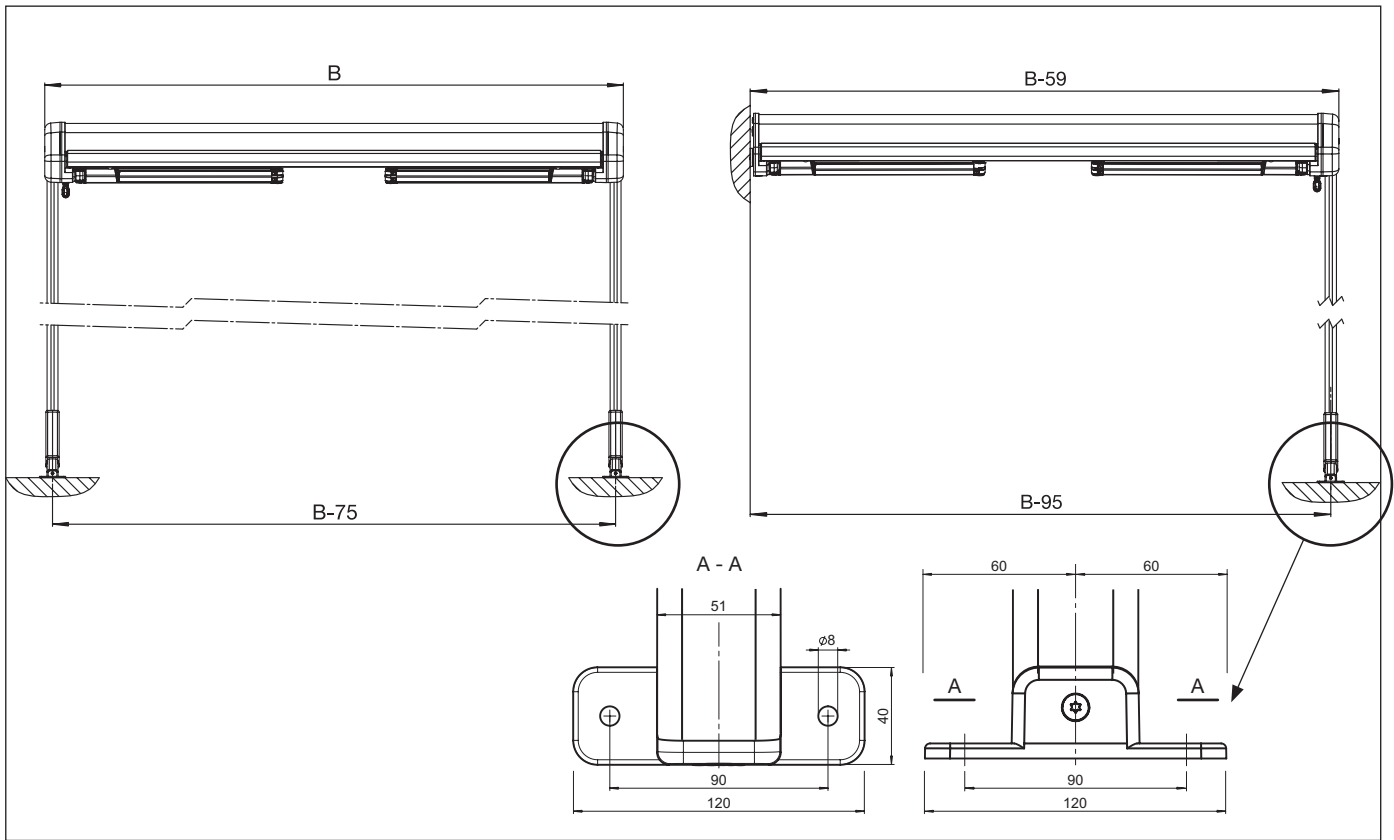


OMBRAMOBIL OS4000

Mobile, double-sides folding-arm awning

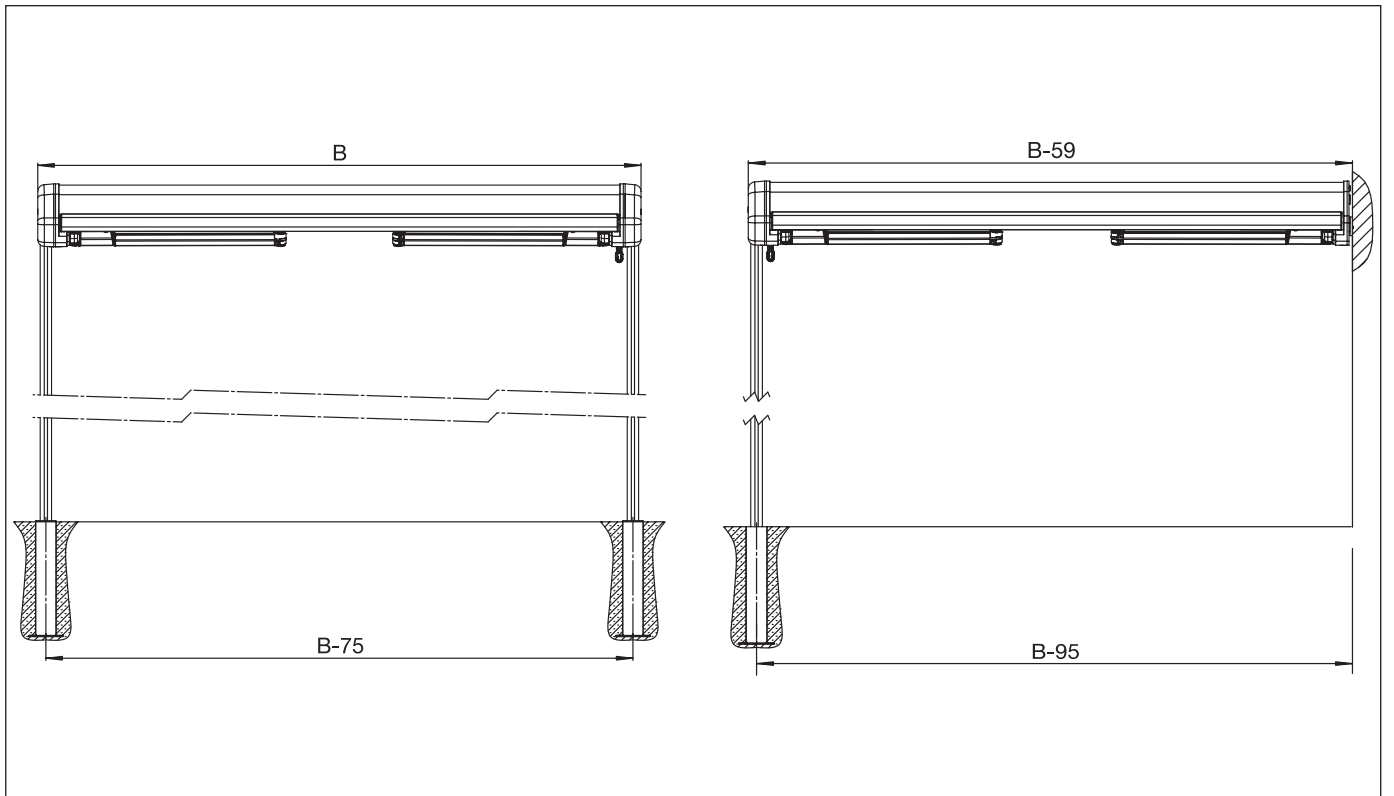
Installation plan with transv. foot OS412

with transverse foot and wall fixation



Installation plan with floor sleeve OS315

with floor sleeve and wall fixation



B = Total width

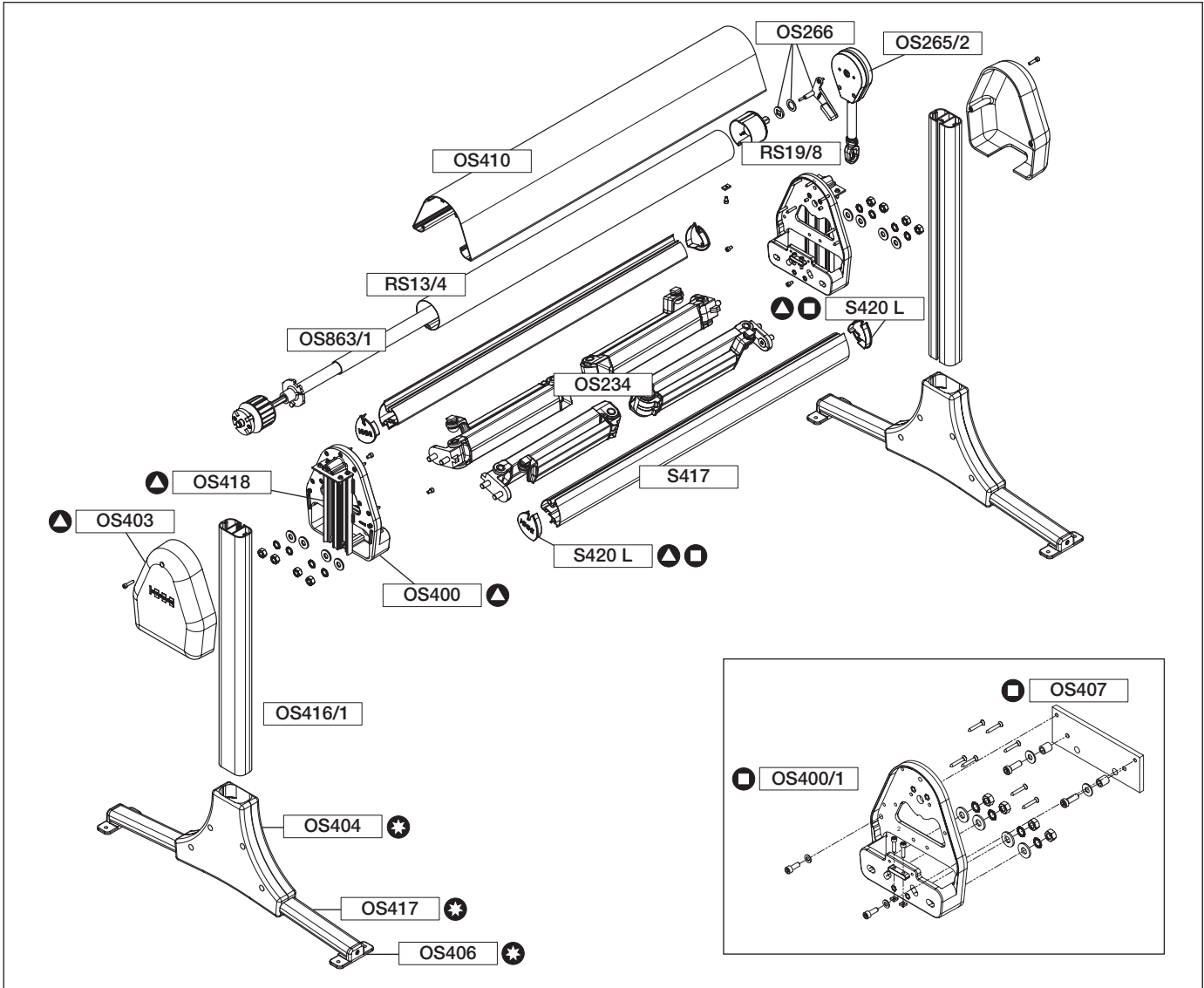


OMBRAMOBIL OS4000

Mobile, double-sides folding-arm awning

OS4000

Exploded view



- Set:
- ▲ = OS4010
 - ◻ = OS4010/1
 - ★ = OS412

OS4000



OMBRAMOBIL OS4000


Mobile, double-sides folding-arm awning

OS4000


Arms incl. front rail fixation

OS234	150cm	pair
	175cm	pair
	200cm	pair
	225cm	pair

Ombromobil kit

OS4010	consisting of:	pc.
	1 Side cap OS400	
	1 Post profile side cap OS403	
	1 Connector profile OS418	
	2 End caps S420	
	1 Set of screws	


Set wall fixation

OS4010/1	consisting of:	pc.
	1 Cassette end plate for wall fix OS400/1	
	1 Wall bracket OS407	
	2 End caps S420	
	1 Set of screws	

Post profile

OS416/1	245cm (for transverse foot)	pc.
OS416/2	305cm (for floor sleeve)	pc.

Transverse foot kit

OS412	consisting of:	pc.
	2 Connector plates OS404	
	2 Foot plate OS406	
	2 Transverse foot OS417	

Floor sleeve

OS315		pc.
-------	--	-----

Floor sleeve cap

OS422		pc.
-------	--	-----

Tubular motors

Motor drive E / E STAS/STAK 3		pc.
Motor drive E radio / E radio STAS/STAK 4		

Gearbox kit

OS4011	consisting of:	pc.
	1 Gearbox OS265/2	
	1 End stop OS266	

Components list

Roller tube galvanised

RS13/4 78 x 1.00mm	4.00m	pc.
	4.50m	pc.
	5.00m	pc.
	5.50m	pc.
	6.00m	pc.
	7.00m	pc.

Auxiliary spring element

OS863/1		pc.
---------	--	-----

Roller gudgeon, square

RS19/8	78mm	Alu	pc.
--------	------	-----	-----

Front rail

S417	294cm	pc.
	354cm	pc.
	414cm	pc.
S417/1	474cm	pc.
	534cm	pc.

Box profile

OS410	299cm	pc.
	359cm	pc.
	419cm	pc.
	479cm	pc.
	539cm	pc.

Operating manuals

S804	80cm	pc.
	100cm	pc.
	120cm	pc.
	135cm	pc.
	150cm	pc.
	160cm	pc.
	180cm	pc.
	200cm	pc.



OMBRAMOBIL OS4000

Mobile, double-sides folding-arm awning

OS4010



Ombromobil kit

Standard equipment for the Ombromobil OS4000. One set required for each awning side.

MATERIAL

Side cap, post side cap:	aluminium alloy casting
Connector profile:	extruded aluminium profile
End caps:	plastic
Set of screws:	stainless steel

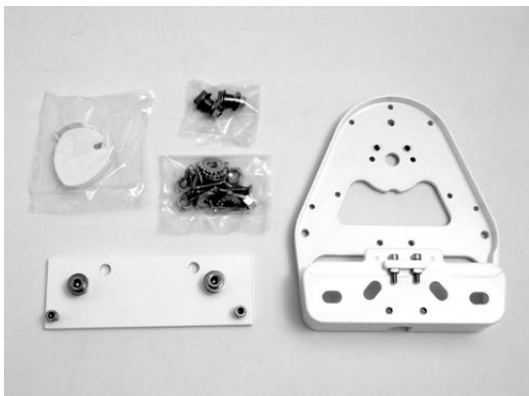
DELIVERY PACKAGE

1 Side cap	OS400
1 Post side cap	OS403
1 Connector profile	OS418
2 End caps	S420
1 Set of screws	

PACKAGING UNIT

Set

OS4010/1



Wall bracket kit

The Ombromobil can be wall-mounted on one or both sides with no supports using the wall fixation.

MATERIAL

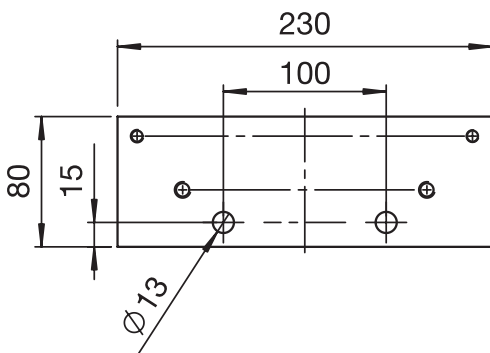
Cassette end cap for wall fix:	aluminium alloy casting
Wall bracket:	extruded aluminium profile
End caps:	plastic
Set of screws:	stainless steel

DELIVERY PACKAGE

1 Cassette end cap for wall fix	OS400/1
1 Wall bracket	OS407
2 End caps	S420
1 Set of screws	

PACKAGING UNIT

Set

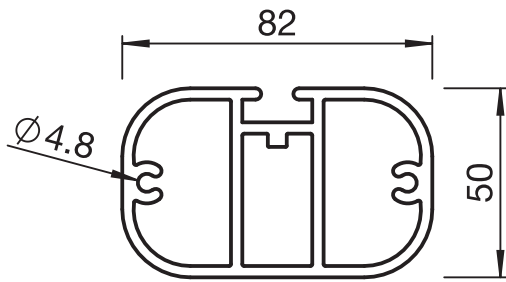




OMBRAMOBIL OS4000

Mobile, double-sides folding-arm awning

OS416/1 - OS416/2



Post profile

The S416/1 post must be used for the transverse foot variant. The S416/2 post is used for the floor sleeve fixation.

ENGINEERING DATA

High OS416/1:	245 cm for transverse foot
High OS416/2:	305 cm for floor sleeve

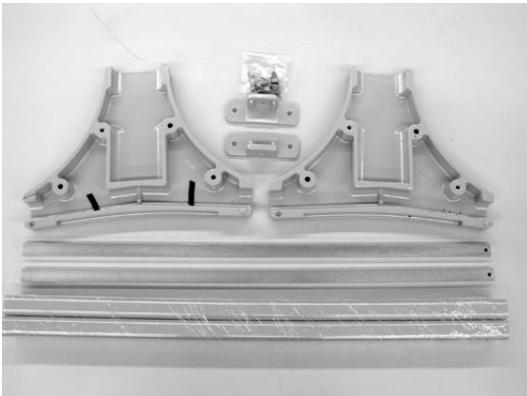
MATERIAL

Extruded aluminium profile

PACKAGING UNIT

Piece

OS412



Transverse foot kit

The transverse foot variant provides a stable, secure fixation because of its additional stabilisers of galvanised iron inside the OS417 transverse foot.

MATERIAL

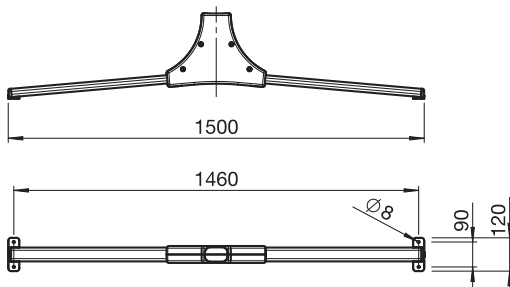
Connector plate:	aluminium alloy casting
Foot plate:	aluminium alloy casting
Transverse foot:	extruded aluminium profile
Set of screws:	stainless steel

DELIVERY PACKAGE

2 Connector plate	OS404
2 Foot plate	OS406
2 Transverse foot	OS417
(including steel reinforcement)	

PACKAGING UNIT

Set

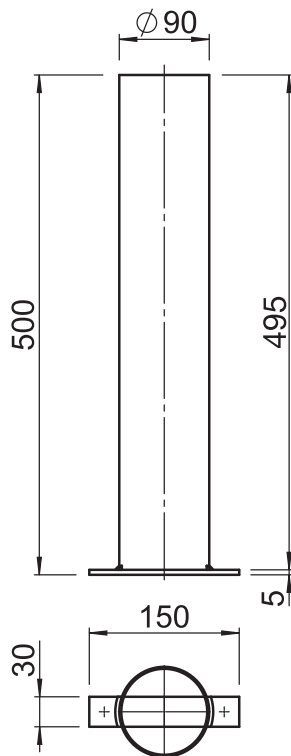




OMBRAMOBIL OS4000

Mobile, double-sides folding-arm awning

OS315



Floor sleeve

The floor sleeves are let into the ground and fix the OS416/2 posts by means of floor sleeve wedges.

ENGINEERING DATA

Floor sleeve: steel tube \varnothing 90 mm, high 500 mm

MATERIAL

Steel tube: hot dip galvanised

PACKAGING UNIT

Piece

OS422



Floor sleeve cap

The OS422 floor sleeve wedge is wedged into the OS315 floor sleeve and fixes it and the OS416/2 post.

MATERIAL

Aluminium alloy casting

PACKAGING UNIT

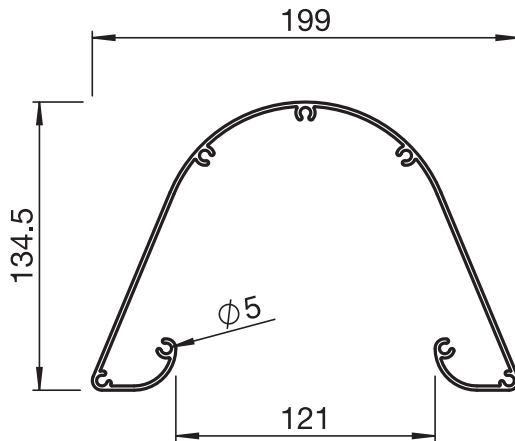
Piece



OMBRAMOBIL OS4000

Mobile, double-sides folding-arm awning

OS410



Box profile

The Ombramobil top box is used as a self-supporting connector and protects both the cover and the arms when retracted. The box can be supplied only in the lengths shown.

MATERIAL

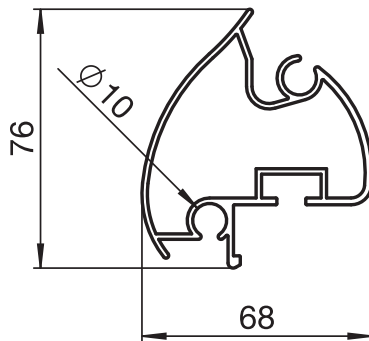
Extruded aluminium profile

PACKAGING UNIT

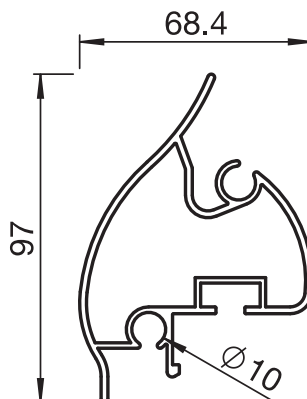
Piece

S417..

S417



S417/1



Front rail

The S417 end rail has a rain gutter and groove for the valance.

The s417/1 front rail is used above a total awning width of 495 cm.

MATERIAL

Extruded aluminium profile

PACKAGING UNIT

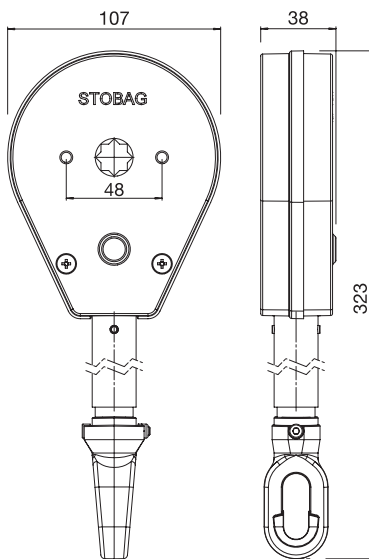
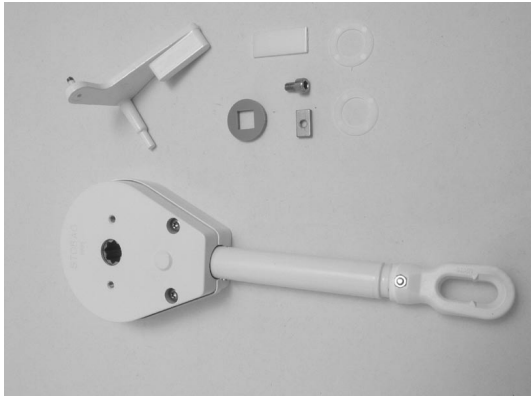
Piece



OMBRAMOBIL OS4000

Mobile, double-sides folding-arm awning

OS4011



Gearbox kit

The OS4011 drive is suitable only for the Ombramobil OS4000.

ENGINEERING DATA

incl. end-stop, reduction 1:4.5

MATERIAL

Aluminium alloy casting

Operating handle ring:

plastic

Screws:

stainless steel

DELIVERY PACKAGE

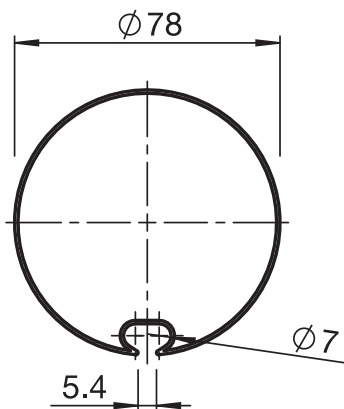
1 Gearbox OS265/2

1 End stop OS266

PACKAGING UNIT

Set

RS13/4



Roller tube

Roller tube ø 78 mm galvanised.

ENGINEERING DATA

RS13/4

ø78 x 1.00mm galvanized

Standard lengths:

400, 450, 500, 550, 600, 700 cm

MATERIAL

Steel sheet

galvanized

PACKAGING UNIT

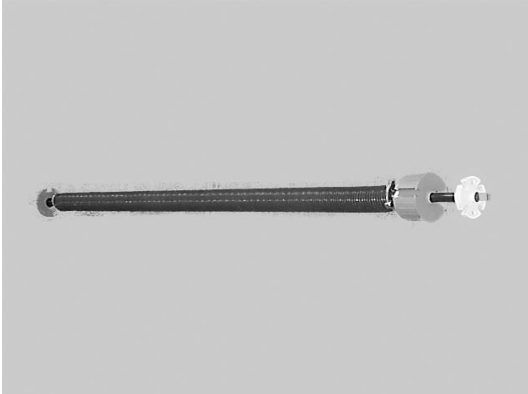
Piece



OMBRAMOBIL OS4000

Mobile, double-sides folding-arm awning

OS863/1



Spring element

The OS863/1 spring is fitted inside the roller tube and allows the cover to be extended or retracted with little effort. The spring may only be used with the Ombromobil OS4000.

ENGINEERING DATA

For roller tube \varnothing 78 mm.

MATERIAL

Spring: spring steel, raw

PACKAGING UNIT

Piece

RS19/8



Roller gudgeon

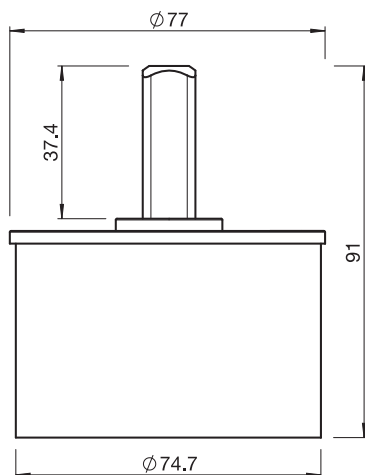
Roller gudgeon, square, for roller tube RS13/4.

MATERIAL

Roller gudgeon: Aluminium

PACKAGING UNIT

Piece





OMBRAMOBIL OS4000

Mobile, double-sides folding-arm awning

OS234

Folding arm



Folding arms for double awning Ombramobil OS4000.

ENGINEERING DATA

Arms with integrated springs.

(Total projection, from front profile left to front profile right).

Arm profiles: 50 x 30mm 67.4 x 41mm
Joints: TÜV approved, 4.8 x 2.25m (2 arms)

MATERIAL

Arm profiles: extruded aluminium profile
Joints: aluminium alloy casting
Double cables: stainless steel

PACKAGING UNIT

Pair